

Hi-MO X6^{Max} Scientist

LR7-54HTH

470~475M

- Suitable for Distribution Market
- Simple design embodies modern style
- Highest efficiency with the best energy generation performance
- Better product warranty, better service



25-year Warranty for
Materials and Processing



25-year Warranty for Extra
Linear Power Output

Complete System and Product Certifications

IEC 61215, IEC 61730, UL 61730

ISO9001:2015: ISO Quality Management System

ISO14001: 2015: ISO Environment Management System

ISO45001: 2018: Occupational Health and Safety

IEC62941: Guideline for module design qualification and type approval

LONGI



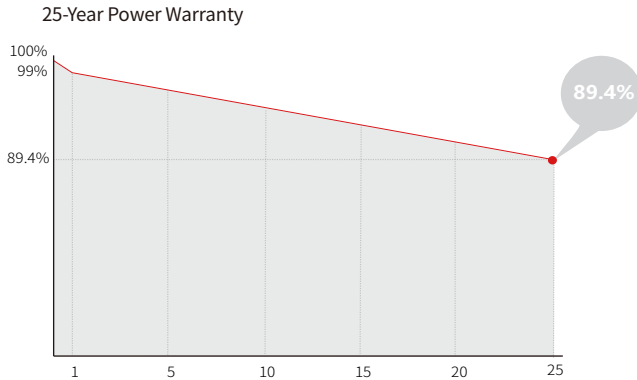
23.3%
MAX MODULE
EFFICIENCY

±5W
POWER BINNING
TOLERANCE

<1%
FIRST YEAR
POWER DEGRADATION

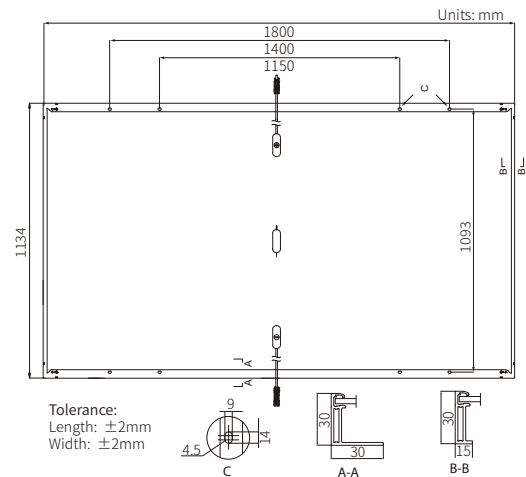
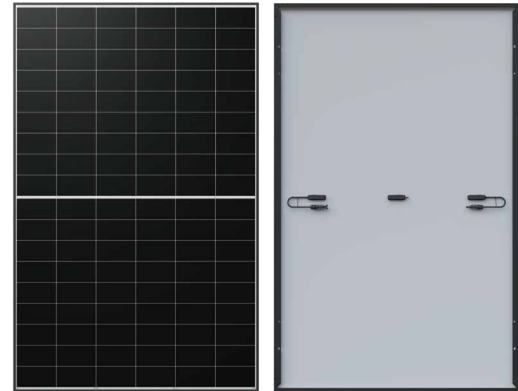
0.40%
YEAR 2-25
POWER DEGRADATION

Additional Value



Mechanical Parameters

| | |
|------------------|--|
| Cell Orientation | 108 (6×18) |
| Junction Box | IP68 |
| Output Cable | 4mm ² , ±1200mm length can be customized |
| Glass | Single glass, 3.2mm coated tempered glass |
| Frame | Anodized aluminum alloy frame |
| Weight | 21.6kg |
| Dimension | 1800×1134×30mm |
| Packaging | 36pcs per pallet / 216pcs per 20' GP / 864pcs per 40' HC |
| Connector | EVO2(Staubli), PV-LR5(LONGi) |



Electrical Characteristics

STC: AM1.5 1000W/m² 25°C

NOCT: AM1.5 800W/m² 20°C 1m/s

Test uncertainty for Pmax: ±3%

| Module Type | LR7-54HTH-470M | | LR7-54HTH-475M | |
|----------------------------------|----------------|-------|----------------|-------|
| | STC | NOCT | STC | NOCT |
| Testing Condition | STC | NOCT | STC | NOCT |
| Maximum Power (Pmax/W) | 470 | 351.2 | 475 | 354.9 |
| Open Circuit Voltage (Voc/V) | 39.75 | 37.32 | 39.95 | 37.51 |
| Short Circuit Current (Isc/A) | 15.00 | 12.12 | 15.07 | 12.17 |
| Voltage at Maximum Power (Vmp/V) | 33.59 | 30.65 | 33.79 | 30.83 |
| Current at Maximum Power (Imp/A) | 13.99 | 11.45 | 14.06 | 11.51 |
| Module Efficiency(%) | 23.0 | | 23.3 | |

Operating Parameters

| | |
|------------------------------------|------------------|
| Operational Temperature | -40°C ~ +40°C |
| Power Measurement Tolerance | ±3% |
| Power Binning Tolerance | ±5W |
| Maximum System Voltage | DC1500V (IEC/UL) |
| Maximum Series Fuse Rating | 25A |
| Voc&Isc Measurement Tolerance | ±5% |
| Nominal Operating Cell Temperature | 45±2°C |
| Protection Class | Class II |
| Fire Rating | IEC Class C |

Mechanical Loading

| | |
|-----------------------------------|--------------------------------------|
| Front Side Maximum Static Loading | 5400Pa |
| Rear Side Maximum Static Loading | 2400Pa |
| Hailstone Test | 25mm Hailstone at the speed of 23m/s |

Temperature Ratings (STC)

| | |
|---------------------------------|------------|
| Temperature Coefficient of Isc | +0.050%/°C |
| Temperature Coefficient of Voc | -0.230%/°C |
| Temperature Coefficient of Pmax | -0.280%/°C |



Importer: LONGi SolarAustralia Pty Ltd
Add: Level 17, 570 George Street, Sydney NSW 2000
Tel: 1800 328 888
Email: info@longi-solar.com.au
ABN: 15 632 322 288
Website: www.longi.com/au

Manufacturer: LONGiGreenEnergyTechnology Co.,Ltd.
Add: No.388,Middle Hangtian Road,Chang'anDistrict,
 Xi'an,Shaanxi710100,P.R.China.
Website: www.longi.com
Tel: (+86)4008-601012
Email: market@longi.com

Specifications included in this datasheet are subject to change without notice. LONGi reserves the right of final interpretation. (20240529 V2) DG
Made in China