

**SCHLETTER**

# **SOLAR MOUNTING SYSTEMS**

ROOFTOP





# WE SUPPORT SOLAR.

AT SCHLETTER, WE BELIEVE ANY ENTERPRISE, BIG OR SMALL, CAN ONLY BENEFIT FROM PASSIONATE SUPPORT.

And if ever there were an industry worth supporting, it's solar. Which is why we care about the success of every solar company—including yours. We're here to urge you forward and support your initiative with products engineered to ensure the success of your projects, which will change our lives and the planet for the better.

If you don't deserve our support, who does?



WATCH OUR BRAND  
FILM





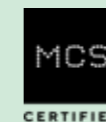
# UNCOMPROMISING QUALITY.

SCHLETTER PRODUCTS ARE DESIGNED TO WITHSTAND ALL WEATHER CONDITIONS.

For the past few decades, we've dedicated ourselves to continually improving the durability, safety, sustainability, and overall quality of our solar mounting systems.

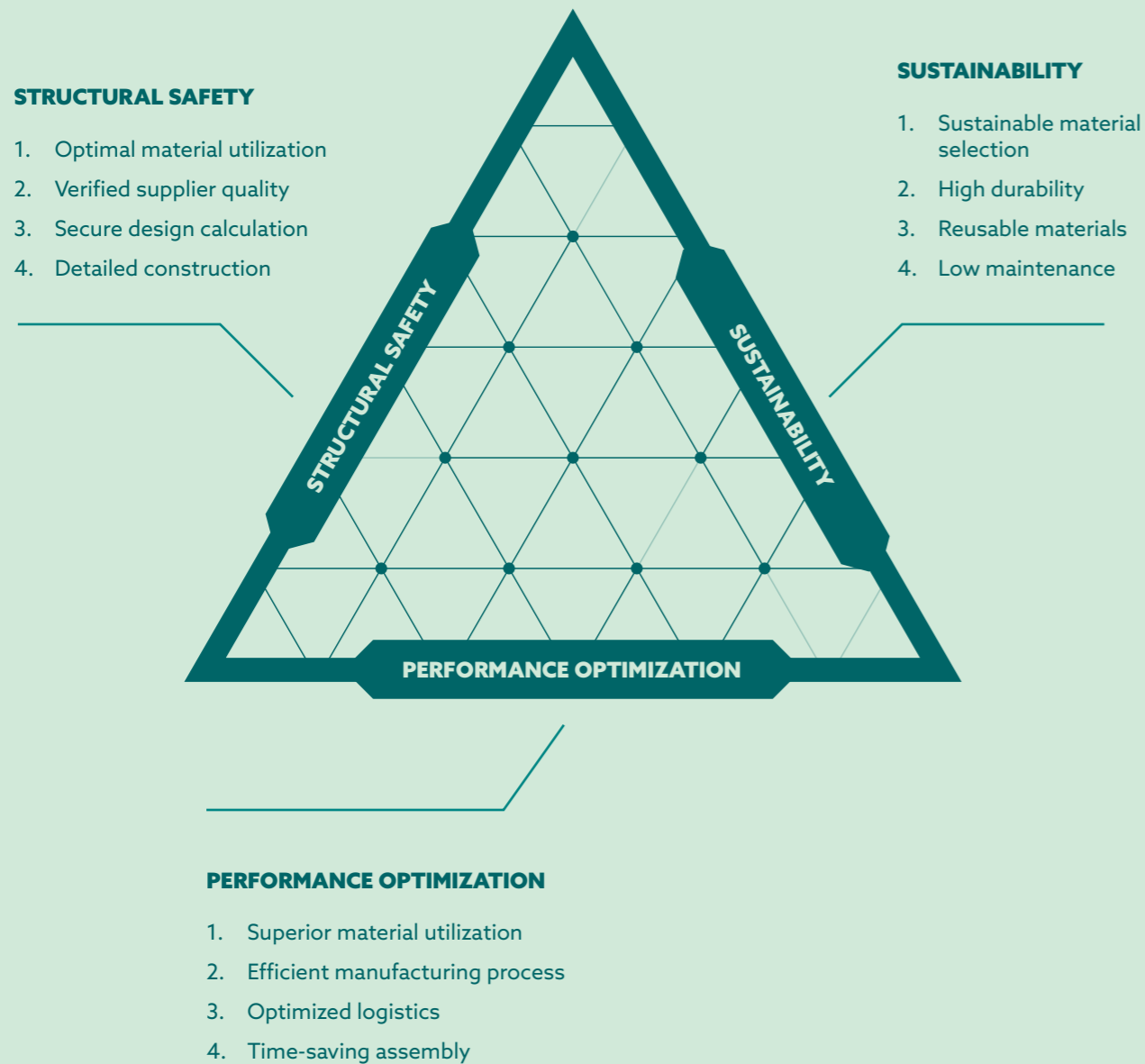
Our quality control process is painstaking, meticulous, and uncompromising, and we use only the highest-quality steel and aluminum.

Specifically designed to combat inclement weather on any terrain, our mounting structures can withstand the harshest conditions—including storm-strength winds, torrential rain, excessive snow-loads, sandstorms, and even earthquakes—for 25 years or more.



# PRODUCT PHILOSOPHY

Our holistic approach to product development encompasses material selection, structural integrity, and environmental impact. All our solutions reflect this approach, balancing affordability, safety, and sustainability.



## THE RIGHT SOLUTION

Schletter offers a comprehensive risk management solution that considers various factors, such as environmental conditions. We support you with our engineering expertise to ensure your modules' safety and optimal performance.

# PITCHED ROOF SOLAR MOUNTING SYSTEMS.

PARALLEL OR ELEVATED MOUNTING FOR ANY ROOF AND PITCH.

With the extensive range and dynamic, module structure of our mounting systems, we're able to provide full support on nearly any roof pitch for all available solar modules.



# 33

## MOUNTING SYSTEMS FOR ALL CONCEIVABLE ROOF AND TILE TYPES.

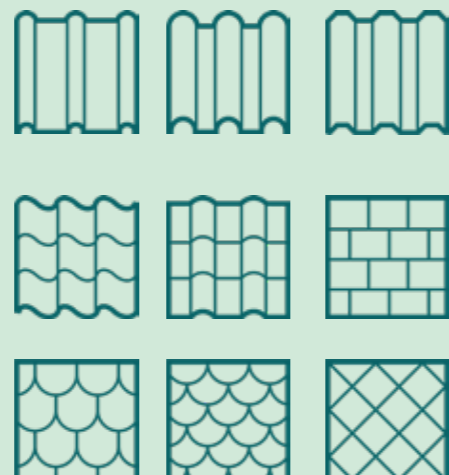
OUR COMPREHENSIVE AND SPECIALLY ENGINEERED SUITE OF SYSTEMS ENABLES YOU TO ADAPT TO THE CHARACTERISTICS OF ANY ROOF OR FAÇADE.

### ROOF TYPES

Our mounting systems are designed for a variety of roof types, including flat, pitched, standing seam, and corrugated, with each component manufactured to ensure a safe, secure, and stable installation.

### ROOF TILES

Whether on slate, ceramic, concrete, or something bespoke, our mounting systems are engineered to provide comprehensive support and longevity irrespective of the size or style of your tiles.



Bavarian State Parliament, 105 kWp, Germany



The High School for Girls Potchefstroom, 366 kWp, South Africa



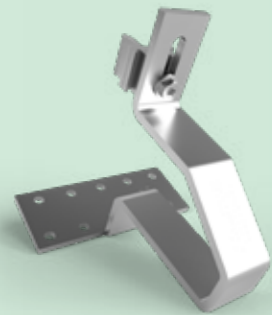
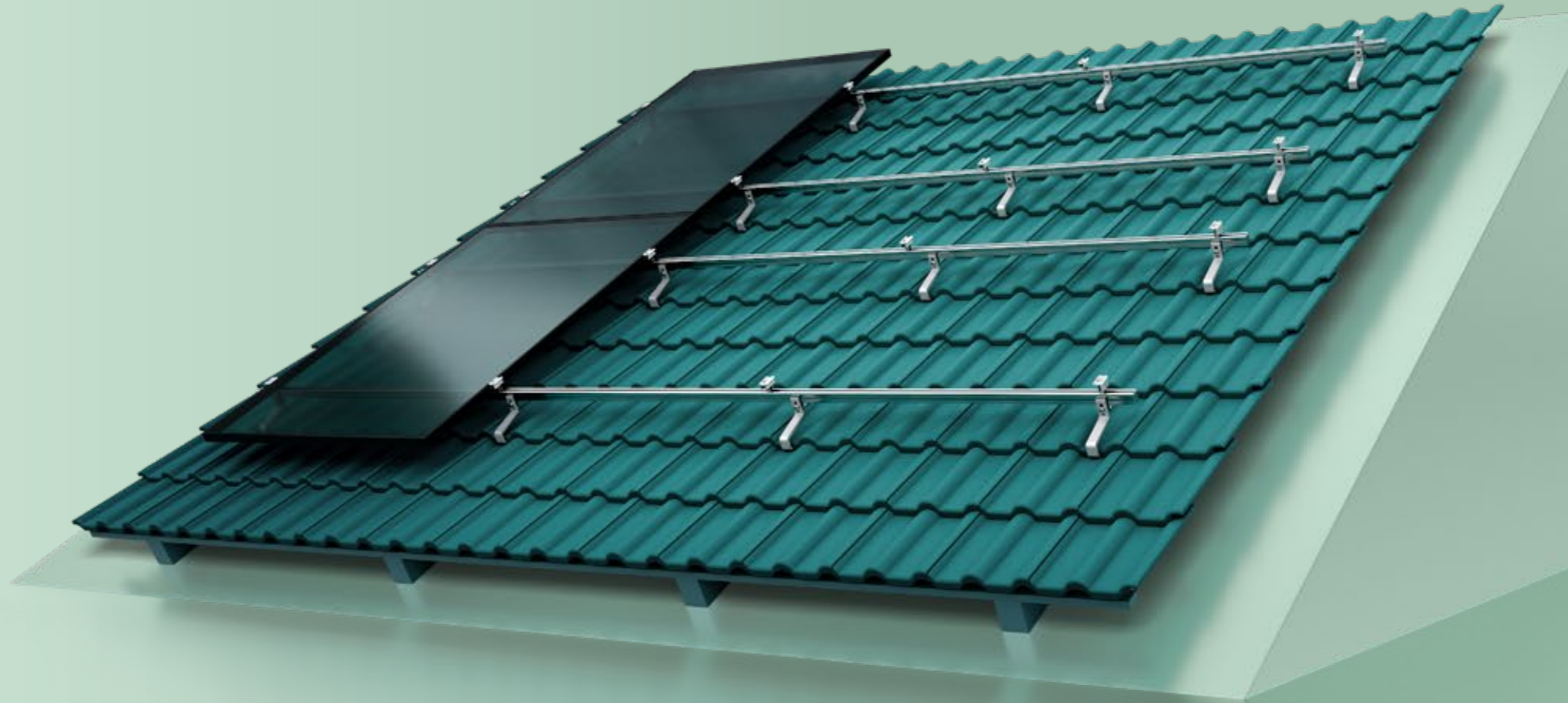
Rumeli Hayvancılık, 949 kWp, Türkiye

# 23

## ROOF HOOKS FOR EVERY SITUATION IMAGINABLE.

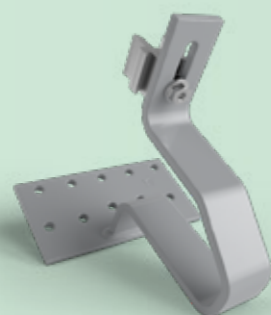
DESIGNED TO BE HIGHLY DURABLE, EASY TO INSTALL, AND CAPABLE OF CARRYING HEAVY LOADS.

- + Roof hooks for all common tile types
- + Quick and simple assembly
- + Easy to store
- + High-quality materials
- + Height-adjustable
- + Compatible with our Classic and ProLine rails



### STAINLESS STEEL ROOF HOOKS

Versatile, robust, welded stainless steel.



### HIGH-GRADE STEEL ROOF HOOKS

Welded hooks ideal for heavy snow loads with protective zinc flake coating.

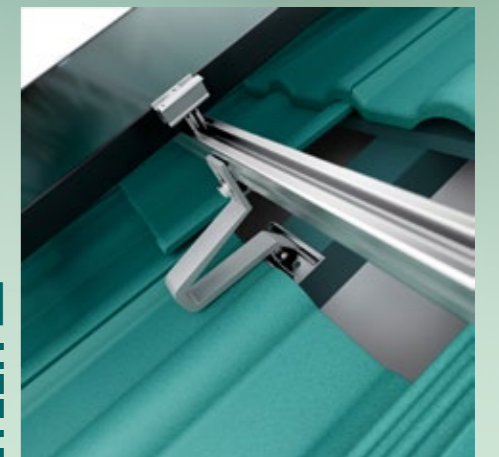


### ALUMINUM ROOF HOOKS

Lightweight, economical, and efficient.



WATCH ASSEMBLY VIDEO



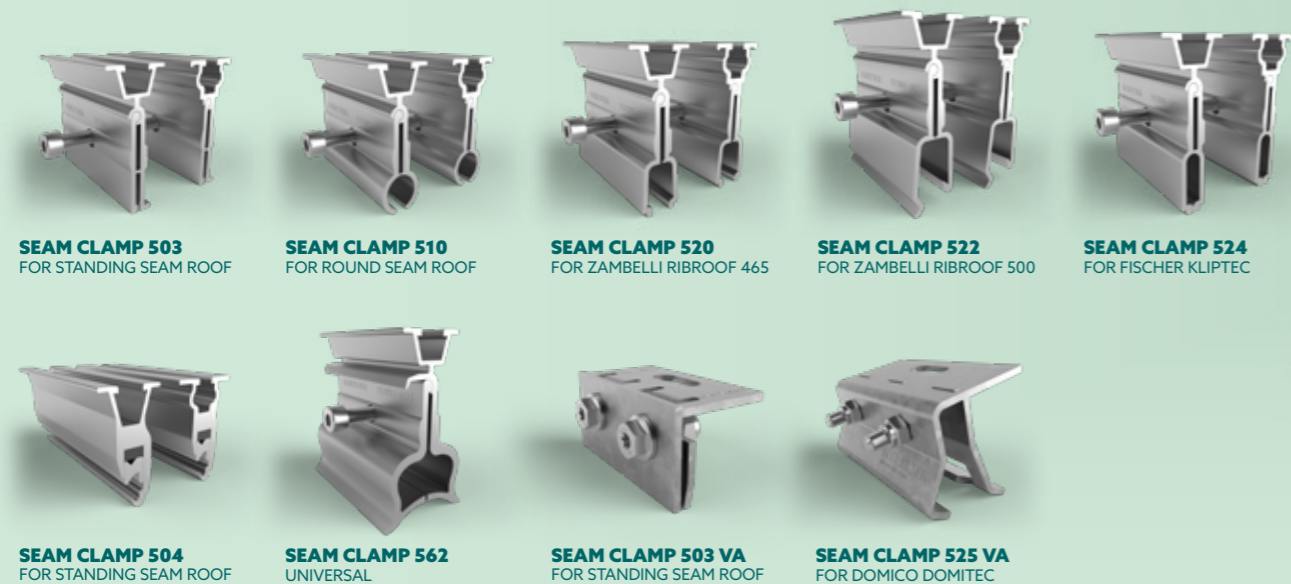
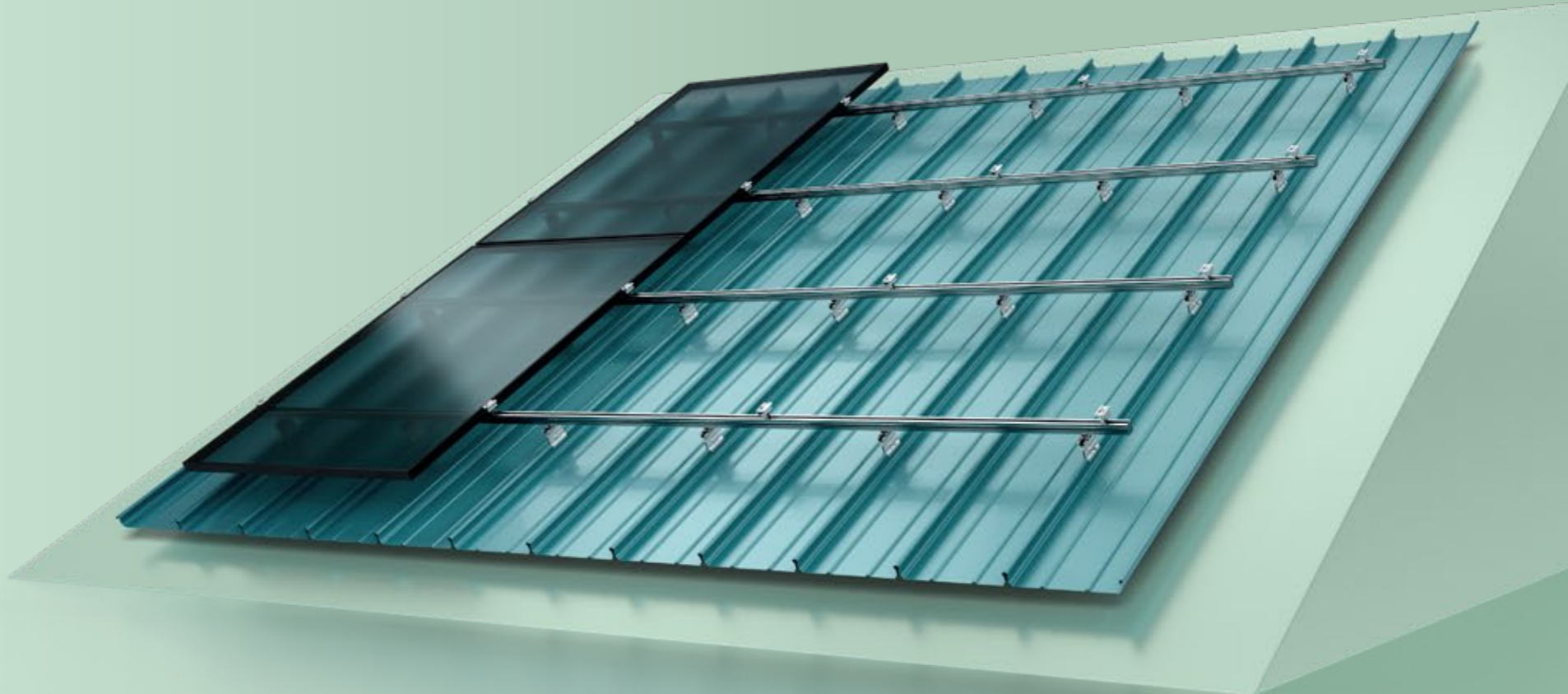
# 16

## SEAM CLAMP VARIATIONS.

RELIABLE MOUNTING SOLUTIONS FOR STANDING SEAM ROOFS, PROVIDING A SECURE AND DURABLE FOUNDATION FOR YOUR SOLAR MODULES.

Our wide range of seam clamps have been developed to fit the requirements of any seam roof manufacturer, providing you with a universal solution.

- + Quick assembly
- + Variable use
- + Excellent value
- + Easy to store
- + Compatible with our Classic profiles



**SEAM CLAMP 503**  
FOR STANDING SEAM ROOF

**SEAM CLAMP 510**  
FOR ROUND SEAM ROOF

**SEAM CLAMP 520**  
FOR ZAMBELLI RIBROOF 465

**SEAM CLAMP 522**  
FOR ZAMBELLI RIBROOF 500

**SEAM CLAMP 524**  
FOR FISCHER KLIPTEC

**SEAM CLAMP 504**  
FOR STANDING SEAM ROOF

**SEAM CLAMP 562**  
UNIVERSAL

**SEAM CLAMP 503 VA**  
FOR STANDING SEAM ROOF

**SEAM CLAMP 525 VA**  
FOR DOMICO DOMITEC



WATCH ASSEMBLY VIDEO





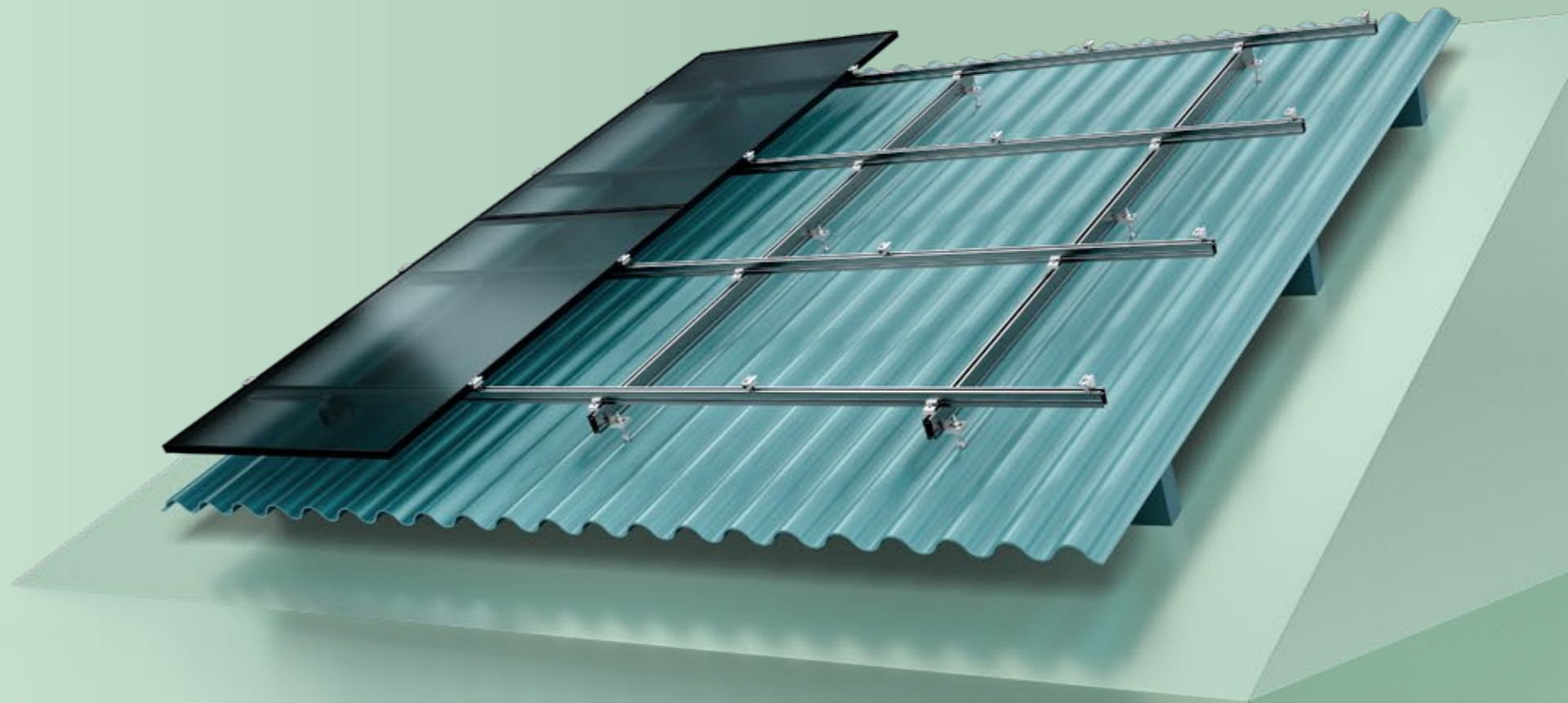
# 4

## HANGER BOLT VARIATIONS.

EXCEPTIONAL STRENGTH AND VERSATILITY FOR ALL ROOF TYPES.

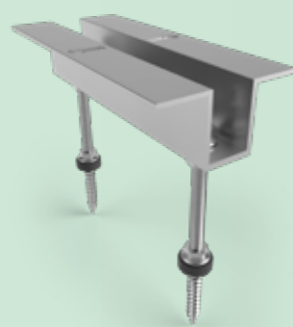
Our hanger bolts provide a secure and strong means of attaching solar modules to a wide variety of roof surfaces.

- + Hanger bolt solutions for fiber cement roofs
- + Compatible with our Classic profiles
- + Excellent stability on sloped, flat, and trapezoidal surfaces
- + Wide variety of options



### HANGER BOLT WITH UNIVERSAL ADAPTER UNO

Universal Adapter Uno M8 for steel purlin. Universal Adapter Uno M10 / M12 for fixing into wooden substructures.



### HANGER BOLT WITH UNIVERSAL ADAPTER DUO

For standard fiber cement corrugated sheets. The ideal choice where there are increased wind and snow loads.



### HANGER BOLT WITH KLICKTOP PRO

Hanger bolt mounting adapter for Classic and ProLine module support profiles.

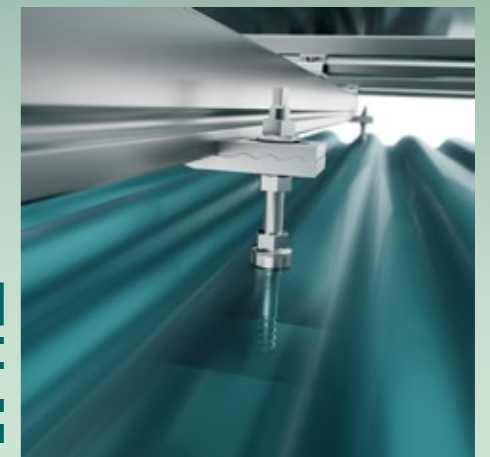


### HANGER BOLT WITH MOUNTING PLATE

For corrugated or trapezoidal sheet roofs with EPDM seal and a mounting plate.



WATCH ASSEMBLY VIDEO

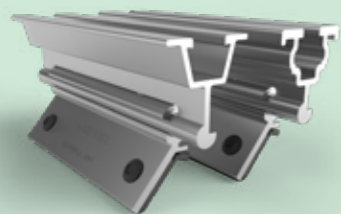


# 4

## TRAPEZOIDAL SHEET CONNECTORS.

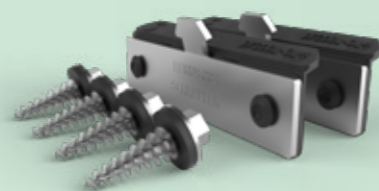
VERSATILE MOUNTING SOLUTIONS FOR TRAPEZOIDAL SHEET METAL ROOFS.

- + Compatible with our Classic profiles
- + Screws onto the side of the trapezoidal sheets for optimal load distribution
- + Easily connects to the substructure



### CLAMPFIT

The cost-optimized trapezoidal sheet metal fastening system for steel and aluminum sheets with widths of 0.5 mm and above.



### SINGLEFIX

Direct fastening of trapezoidal sheets with widths of 0.5 mm and above.



### UNIVERSAL ADAPTER

The universal fastening system for self-supporting trapezoidal sheet roofs and sandwich elements.



WATCH SINGLEFIX ASSEMBLY VIDEO



WATCH CLAMPFIT ASSEMBLY VIDEO



# 7

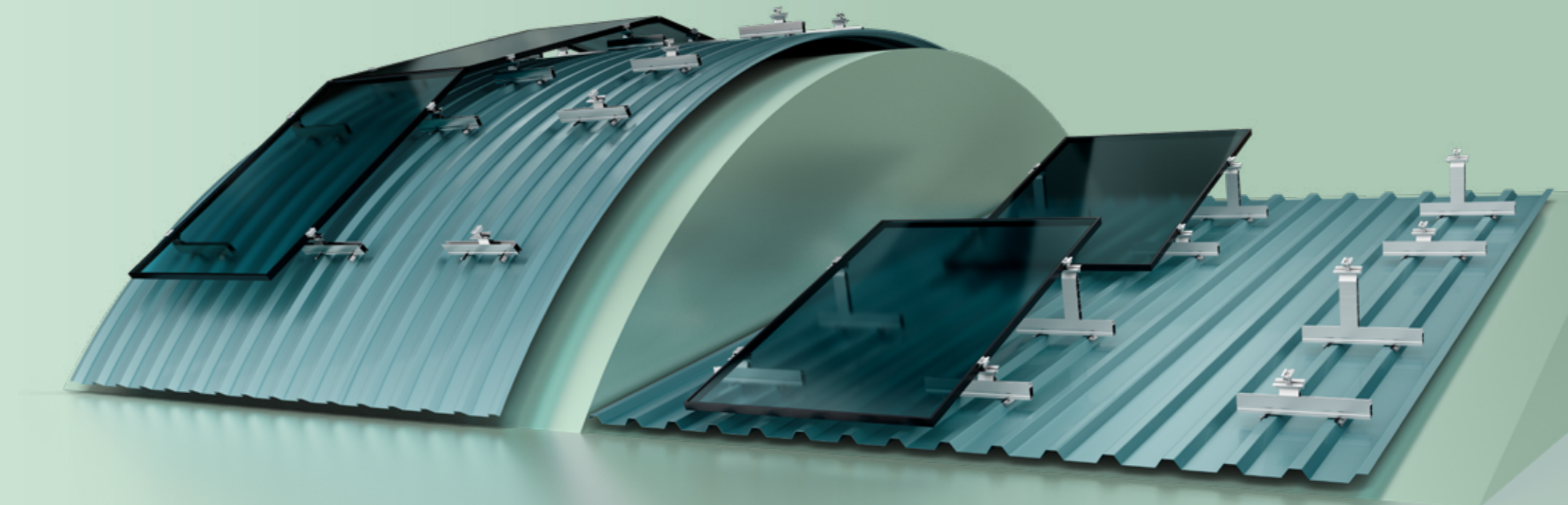
## FIX-Z SHEET CONNECTORS.

THE FIX-Z IS THE IDEAL ADDITIONAL SUPPORT FOR FLAT, INCLINED, AND TRAPEZOIDAL SHEET METAL CLADDINGS.

For trapezoidal roofs with a slope of less than ten degrees, installing modules parallel to the roof may not be ideal for maximizing yield or self-cleaning. At the same time, higher loads often make conventional support using struts infeasible or not cost-effective.

In such cases, we recommend shallow support angles, which is why we developed the Fix-Z Pro.

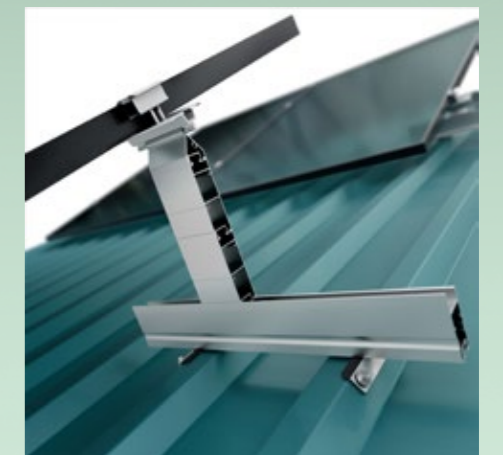
- + Quick and easy to mount
- + Improved rear ventilation
- + Enhanced self-cleaning
- + Optimal load transfer through roof cladding
- + Extra yield with favorable system price
- + Additional inclinations possible



7° OR 15°



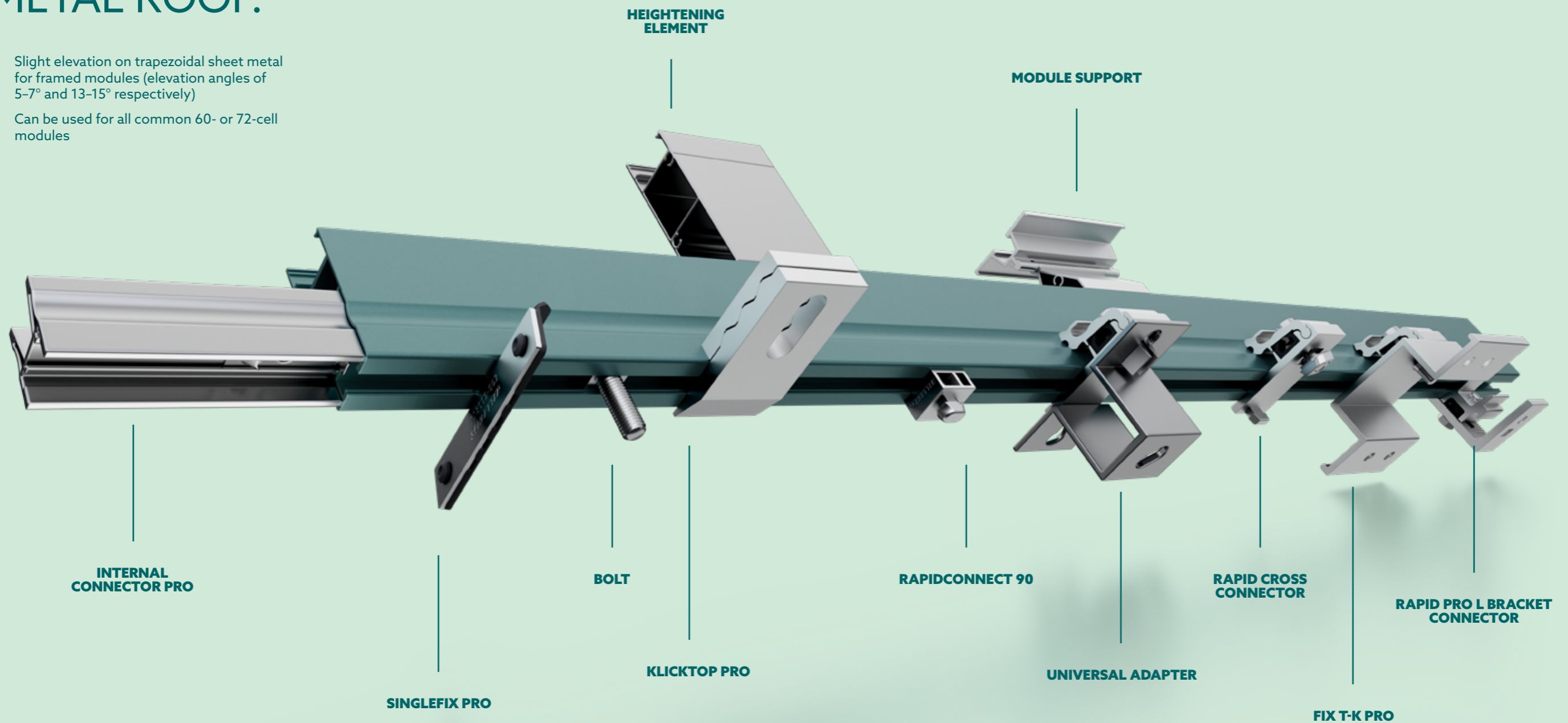
INCLINATION ANGLES BETWEEN 7° AND 15° POSSIBLE.



# FIX-Z PRO.

## AN INFINITELY ADAPTABLE SOLUTION FOR YOUR SHEET METAL ROOF.

- + Slight elevation on trapezoidal sheet metal for framed modules (elevation angles of 5-7° and 13-15° respectively)
- + Can be used for all common 60- or 72-cell modules



# FLAT ROOF SOLAR MOUNTING SYSTEMS.

## BALLASTED AND FASTENED SOLUTIONS FOR ANY MEASUREMENTS.

Our flat roof mounts are designed for quick and easy installation irrespective of structural parameters. Our expert engineers calculate the ideal design for your roof's unique shape, size, and slope to ensure loads are within limits and spread optimally over your building's structure.

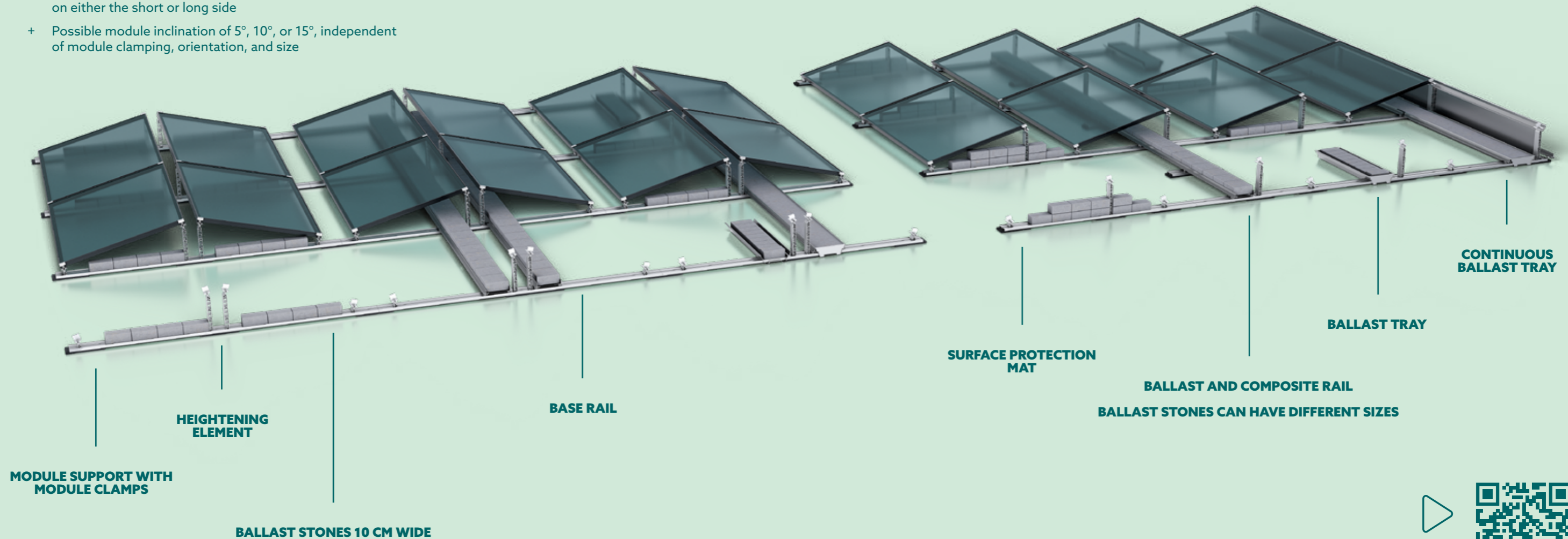
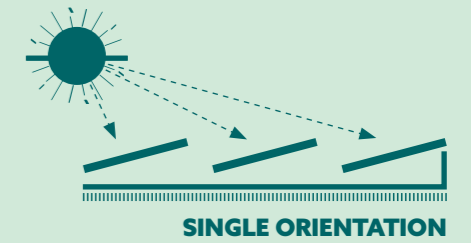
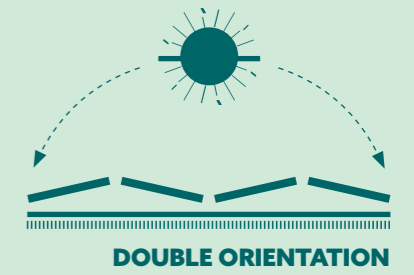
In addition to wind speed and snow load limits, our designs comply with all applicable building regulations. Extensive planning and intelligent design procedures ensure the integrity of your roof is never compromised that it remains completely leak-proof.



# FIXGRID PRO.

FIXGRID PRO ENABLES YOU TO EASILY ATTAIN YOUR DESIRED INCLINATION ANGLE AND CREATE INFINITE VARIATIONS WITH JUST A FEW COMPONENTS.

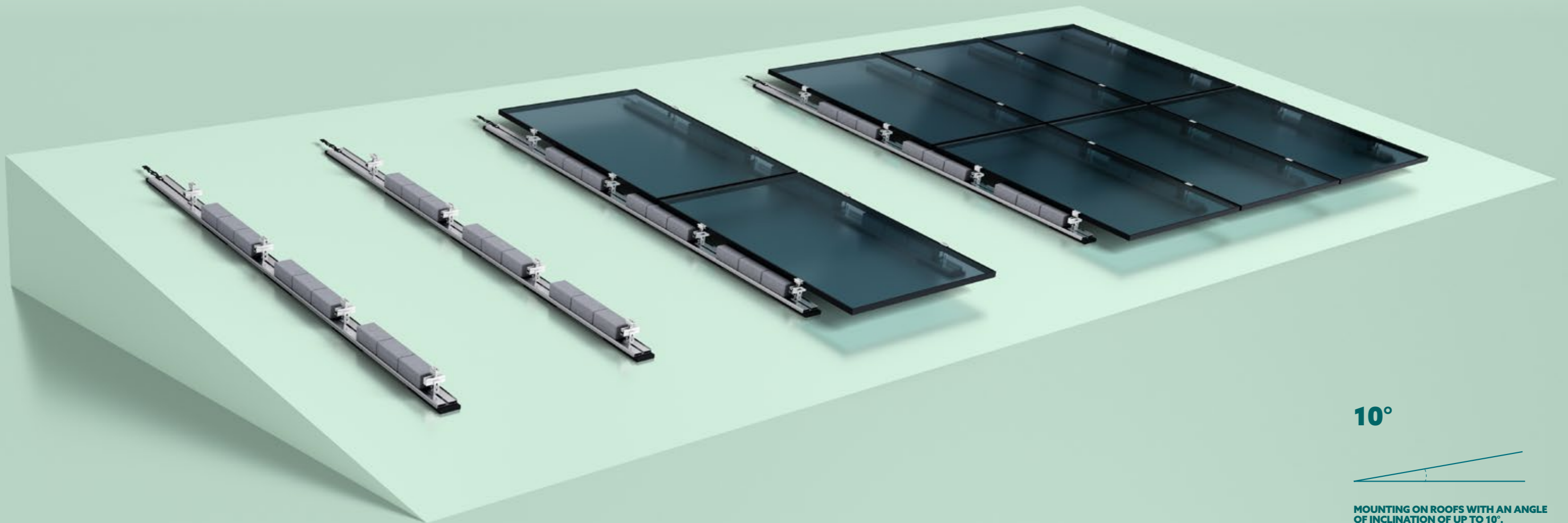
- + Ballast optimization and reduction through improved aerodynamics
- + Flexible and time-saving planning and assembly
- + Compatible with our ProLine module clamps
- + Tool-free assembly of the heightening elements
- + Modules can be mounted in portrait or landscape and clamped on either the short or long side
- + Possible module inclination of 5°, 10°, or 15°, independent of module clamping, orientation, and size



# FLATGRID PRO.

A SINGLE, COST-EFFECTIVE MOUNTING UNIT FOR FLAT AND SLIGHTLY PITCHED ROOFS, FEATURING A PARALLEL FLUSH MOUNT DESIGN COMPATIBLE WITH MOST SCHLETTER COMPONENTS.

- + Minimal superimposed loads required
- + Integrated surface protection mat
- + Optimized for material and cost
- + Zero roof penetration
- + Reduced ballast
- + Other supports and connections available



10°



MOUNTING ON ROOFS WITH AN ANGLE OF INCLINATION OF UP TO 10°.

# WE WANT THE WORLD TO BE BETTER OFF WITH SCHLETTER IN IT.

For a long time, we've felt that companies should be doing more than just selling products. They should be held accountable for their decisions and actions, and take seriously their responsibilities regarding the environment, their employees, and their impact on wider society.

So, after months of hard work and introspection, we're proud to finally share our CSR story so far in a way that truly reflects who we are—not just as a

leading manufacturer of solar mounting systems, but as a globalized, diverse team of purpose-driven individuals working to create a fairer, cleaner, and more sustainable world.

Scan the QR code below to download your copy and see exactly what we've done, are doing, and plan to do for people and planet alike.



**>28.3 MILLION  
TONS CO<sub>2</sub>**

SAVED BY PV INSTALLATIONS  
ON OUR MOUNTING SYSTEMS  
PER YEAR

Source for conversion formula: German  
Federal Environmental Agency and  
Solarcluster BW







# WITH YOU ALL THE WAY.

Mounting a photovoltaic system requires more than a mere metal clamp—it needs a plan thoroughly thought through and adapted to suit your specific circumstances. It starts with initial soil or structural analyses and ends with tightening the very last screw. We are here to guide and accompany you through the entire process. With our uncompromising quality standards at every step, we ensure our premium-grade products and solutions enable your project to reach its full potential. This careful and holistic approach is an integral part of our company's DNA.

**No matter how broad and long-term your vision or ambitious and imaginative your goals, when it comes to solar, one company is with you all the way.**

**1968**  
FOUNDED IN BAVARIA,  
GERMANY

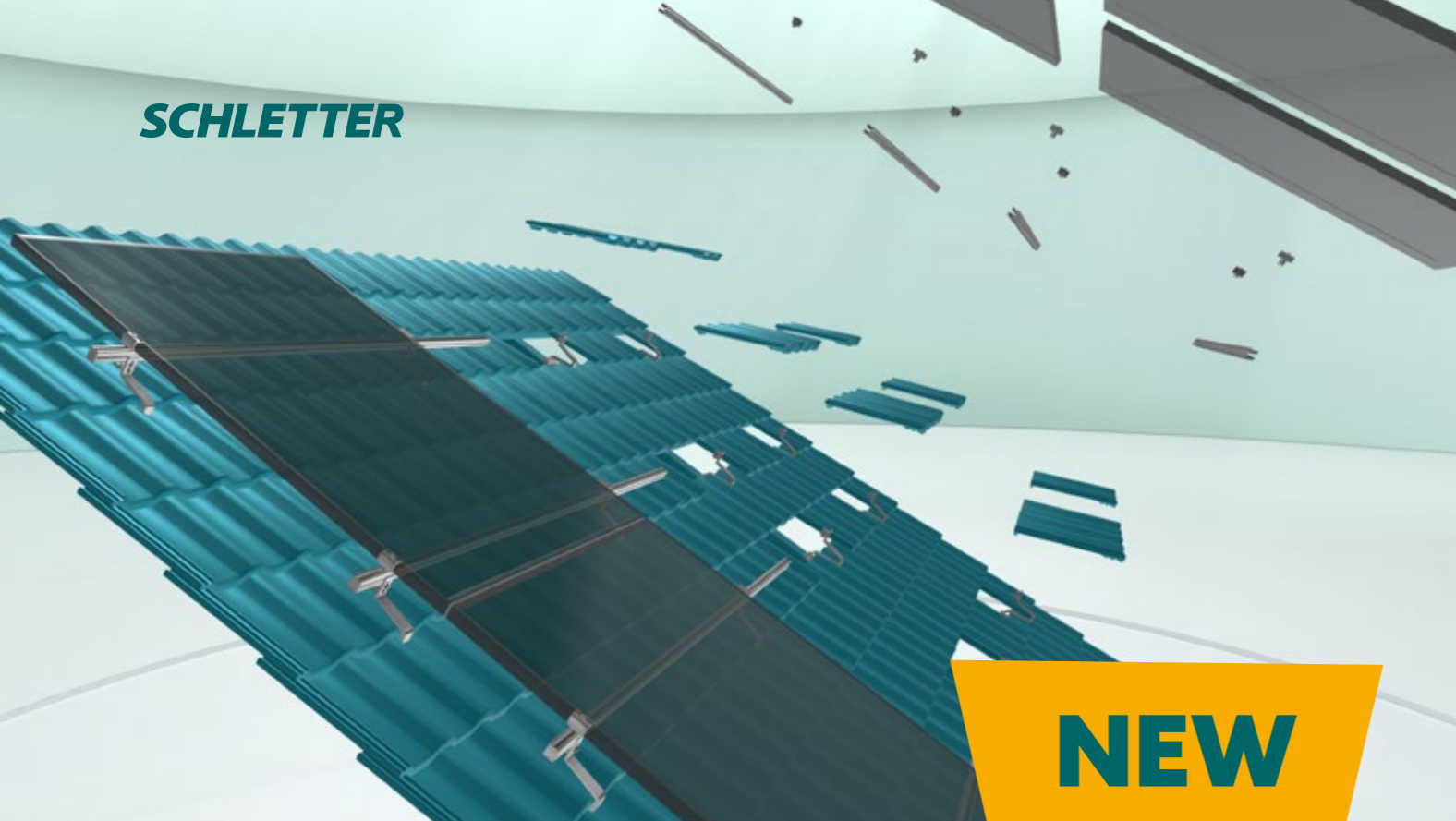
**>580**  
PRODUCTS FOR ALL SOLAR  
MOUNTING NEEDS

**>110**  
COUNTRIES WITH SCHLETTER  
SYSTEMS INSTALLED

**>55 GWp**  
SYSTEMS INSTALLED  
WORLDWIDE

**>105**  
GLOBAL PATENTS  
SECURED

**>700**  
EMPLOYEES WORLDWIDE



NEW

# WANT TO GET CLOSER? NOW YOU CAN.

We recently opened the doors to the House of Schletter—our new, digital home designed for installers, wholesalers, and anyone else who supports solar alongside us.

Inside, you can interact with life-like, digital replicas of some of our most popular products, and learn all you need to know about them in a way that's far more immersive than any manual or handbook.

You can also put our tracking system to the ultimate test in our weather lab, which allows you to control the elements and see exactly how our system adapts to them.

Everyone's welcome at the House of Schletter—so put the brochure down for a moment, and dive in. Just visit [houseofschletter.schletter-group.com](http://houseofschletter.schletter-group.com), or scan the QR code.





**SCHLETTER SOLAR GMBH**  
Alustraße 1, 83527 Kirchdorf, Germany  
[www.schletter-group.com](http://www.schletter-group.com)